



Civil / Structural /
Transportation Engineers

Construction
Inspectors/Managers

Bridge Condition
Inspectors

New Jersey
New York
Pennsylvania

www.sjheng.com

Facility Condition Surveys on a "Call-in" Basis,

PA Agreement No. 405-12-018, 405-13-018, 405-14-018

New York and New Jersey

PROJECT TYPE

Facility Condition Assessment

PROJECT OWNER/CLIENT

Port Authority of New York and New Jersey

CONTRACT AMOUNT

\$253,000 fee to date

START & END DATES

7/2012 – 4/2016

ROLE

Prime
Facility Condition Surveys
Structural, Civil Engineering

REFERENCES

Chung Lin, (973) 792-3981

PROJECT DESCRIPTION

SJH was awarded a four year IDIQ contract for the Condition Surveys of PANYNJ facilities in the North Region. Several concurrent tasks have been assigned and SJH is capable of handling multiple tasks simultaneously. Tasks include:

BMW Parking Structure at Bayonne Marine Terminal, Bayonne, NJ, 2012-2013

SJH provided a condition assessment of a three-level precast concrete parking structure with ramps and stairs. The facility houses a 100,000 square foot Vehicle Maintenance Facility to repair high end cars and a dining-type facility. There are two Concrete Masonry Unit buildings and a car wash building. As part of PANYNJ's biennial inspection program, SJH performed a structural inspection and provided a report with Priority, Safety and Routine repairs. High reach equipment was rented to access elevated areas for hands on inspections. The inspection was 100% visual and 10% hands on. A report of findings, with CADD drawings, developed per PANYNJ's guidelines, and a summary of recommended repairs were provided.

Post Hurricane Inspection of MOTBY Buildings 41, 51 and 108, Bayonne, NJ, 2012-2013

Most observed problems with the three buildings and waterfront wall structures located along the harbor at the Terminal, were attributed to buoyancy and uplift due to excessive floodwater and erosion that undermined the integrity of the subgrade. The inspection was performed on an emergency basis to assess the damages to the facilities, concrete bulkhead and gabions, exposed piles, building supports, crawl spaces with timber framing, and numerous sinkholes surrounding concrete pads. We developed retrofit recommendations with detail drawings and specifications for immediate repairs. This project involved baseline surveys.

Bathgate Industrial Park High Mast Lighting Inspection, Bronx, NY, 2013 -2014

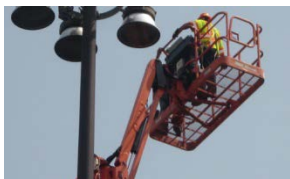
This task order involved the structural integrity inspection of high mast lighting structures, connections, base plates, anchor bolts, and concrete pedestals.

Bathgate Industrial Park, Bronx, NY, 2014 - 2015

SJH is providing baseline surveys for a school, a daycare center and a food processing plant. Condition Surveys include the inspection of all structural elements, the roof and supporting framing. For the baseline surveys, we developed CADD drawings from available plans, and field measured member sizes to confirm the structural configuration and sizes. The roof was inspected from the underside and from the top. The inspection and report development will follow PANYNJ's "Standards for In-depth Integrity Inspection of Buildings," dated April 2004.

On-Site Consultant Facility Condition Surveys Technician, Newark, NJ, 2014 - 2015

We are providing an on-site technician for a two year assignment under this task.



*"Your unselfish performance,
when many of you faced storm
related difficulties at home,
deserves recognition.*

*The facilities you inspected
could not have been restored
to service as quickly as they
were without your diligence."*

Steven Vecchione, PE,
PANYNJ

SJH Engineering, P.C.