



Civil / Structural /  
Transportation Engineers

Construction  
Inspectors/Managers

Bridge Condition  
Inspectors

*New Jersey  
New York  
Pennsylvania*

[www.sjheng.com](http://www.sjheng.com)

## **New York Supreme Court Civil Branch**

Manhattan, New York

### **PROJECT TYPE**

Design

### **CONTRACT AMOUNT**

\$2,000,000 construction value

### **ROLE**

Subconsultant to Gannett Fleming, Inc.  
Structural Engineering  
Civil Engineering  
Landscape Architecture

### **PROJECT OWNER/CLIENT**

New York City Department of Citywide  
Administrative Services

### **START & END DATES**

09/2009 – 08/2010

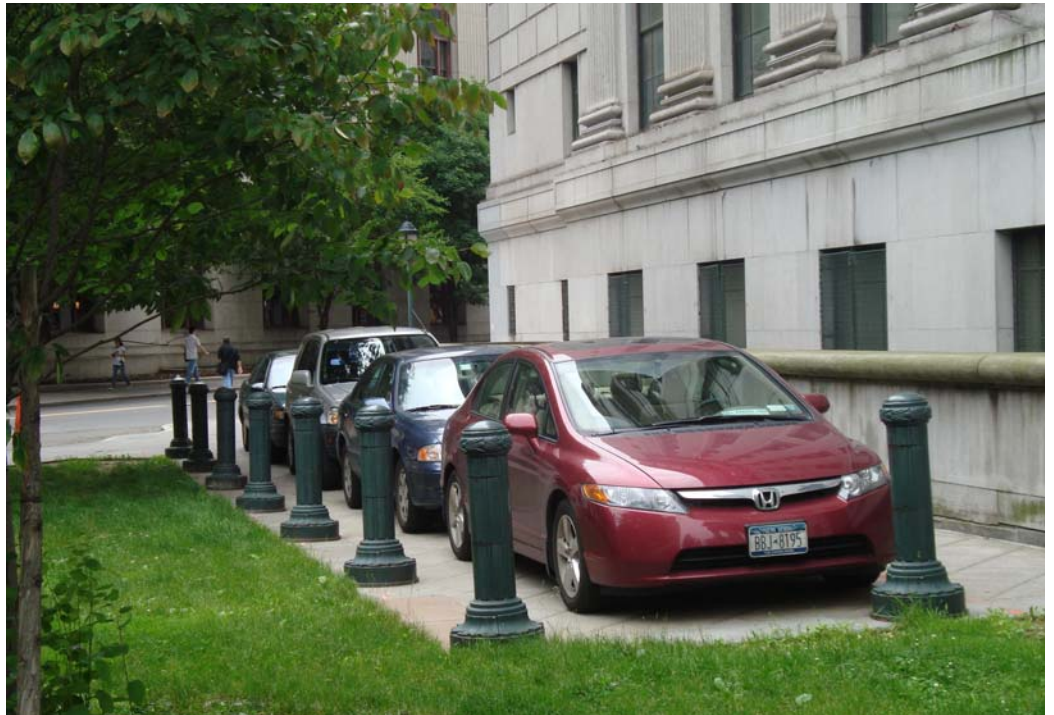
### **REFERENCES**

Joe Tulumello, Gannett Fleming, Inc.  
(212) 967-9833

### **PROJECT DESCRIPTION**

This project involved the inspection and development of specific details regarding the site reconstruction, area of site disturbances, and proposed landscaping at the Civil Branch of the New York Supreme Court in Manhattan. In addition to the removal of existing trees, benches, light poles, and sidewalk, the landscaping work involved designing the installation of new trees, benches, light poles and sidewalks as per the park type setting standards set for the site.

We also designed maintenance and protection of traffic drawings to maintain a minimum 5-foot pathway for pedestrian traffic during the construction. We coordinated design work with the agency, the utility company and the Office of Construction Mitigation and Coordination (OCMC) to acquire the necessary construction work permits.



**SJH Engineering, P.C.**