



Civil / Structural /
Transportation Engineers

Construction
Inspectors/Managers

Bridge Condition
Inspectors

*New Jersey
New York
Pennsylvania*

www.sjheng.com

Design Services, Condition Assessment and Prioritization of Repair for Turnpike Toll Utility Buildings, Contract No. OPS T3211

New Jersey

PROJECT TYPE

Design, Facilities Condition Assessment

PROJECT OWNER/CLIENT

New Jersey Turnpike Authority

CONTRACT AMOUNT

\$60,000 fee

START & END DATES

04/2010 – 12/2010

ROLE

Subconsultant to Gannett Fleming, Inc.
Structural Engineering
Building Condition Survey

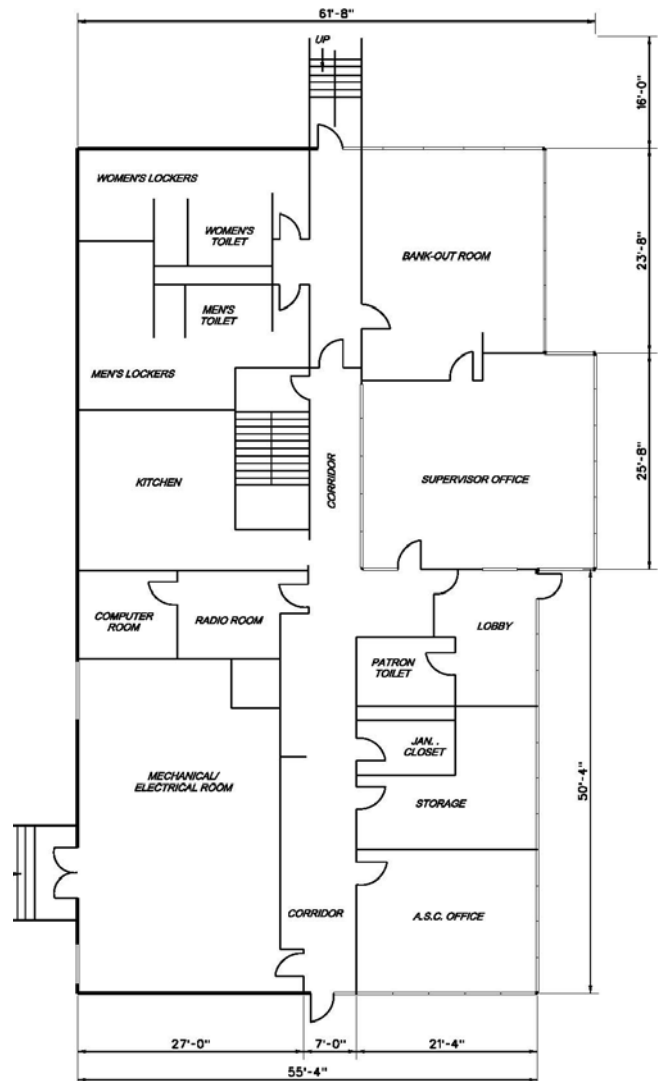
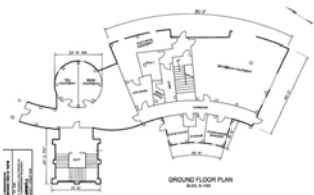
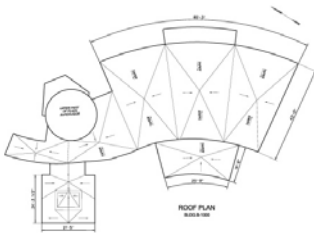
REFERENCES

Brian Dorr, P.E., Gannett Fleming, Inc.
(908) 755-0040

PROJECT DESCRIPTION

We participated in the Condition Assessment and Prioritization of Repair for Turnpike Toll Utility Buildings under the 2009 Capital Construction Program. Our scope of work consisted of building inspections and condition assessments to prioritize repairs for over fourteen (14) of the NJ Turnpike Toll Utility Buildings. For several of the buildings, as built plans were not available. SJH visited each building, conducted an inspection, and developed elevations of the structures. SJH inspectors participated on the Condition Assessment team to determine deficiencies, and to develop recommendations for upgrades.

Reports consisted of repair recommendations and upgrades were developed for the Toll Plaza Utility Buildings included under this contract.



SJH Engineering, P.C.