



Civil / Structural /  
Transportation Engineers

Construction  
Inspectors/Managers

Bridge Condition  
Inspectors

New Jersey  
New York  
Pennsylvania

www.sjheng.com

# Garden State Parkway Mainline Widening for Shoulder Restoration Milepost 88.5 to 93.5, OPS No. P3299

Townships of Toms River, Lakewood & Brick, Ocean County  
Township of Wall, Monmouth County, New Jersey

## PROJECT TYPE

Design

## PROJECT OWNER / CLIENT

New Jersey Turnpike Authority

## CONTRACT AMOUNT

\$1,187,000 fee

## START & END DATES

09/2010 – Ongoing

## ROLE

Subconsultant to Michael Baker, Jr., Inc.  
Bridge Engineering

## REFERENCES

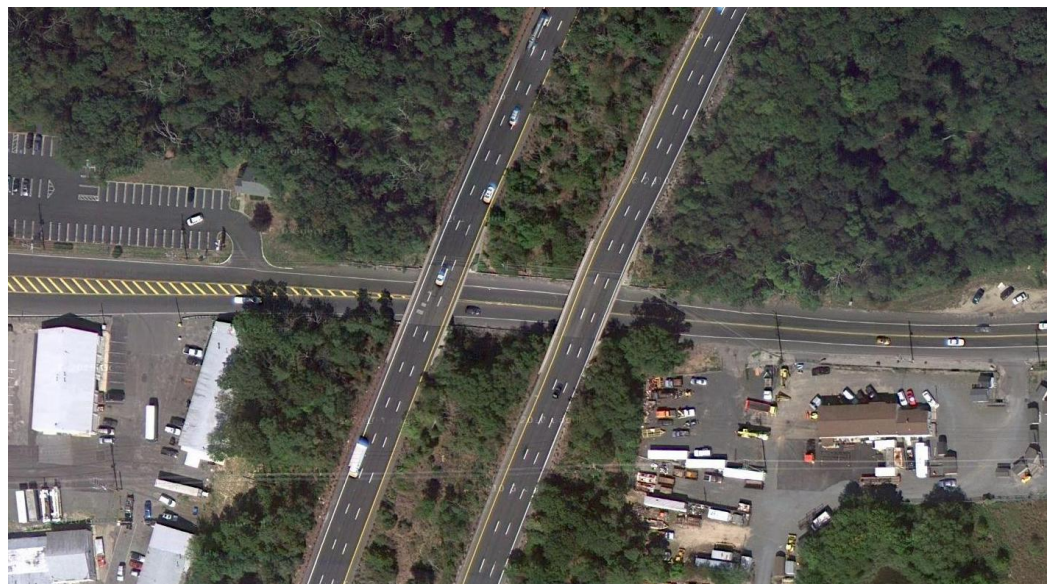
Don Chappa, NJTA  
(732) 750-5300X 8213

## PROJECT DESCRIPTION

We are providing engineering design and the development of contract drawings, specifications and cost estimates for the replacement of four (4) bridges and eight (8) Sign Structures, as part of the New Jersey Turnpike Authority's Garden State Parkway (GSP) Mainline Widening for Shoulder Restoration Program from Milepost 88.5 to 93.5.

SJH is responsible for the phased design of four bridges carrying GSP over Chambers Bridge Road and Route 88. We recently submitted Phase D plans. Two bridges involve superstructure replacement with semi integral abutments, and two are completely new structures. The existing structures are single span multi steel stringer concrete deck bridges. They will be replaced with similar longer and wider single span bridges. The use of semi integral abutments with wrap around MSE walls along with other structural configurations, such as the use of prestressed concrete beams, was investigated during the Pre Phase B Structure Type Study. Seismic analysis will be performed. The reconstruction is staged and three lanes of traffic on GSP in each direction are maintained at all times. This is achieved by the use of "crossover" lanes.

We are also responsible for developing design drawings and details for Sign Structures.



**SJH Engineering, P.C.**